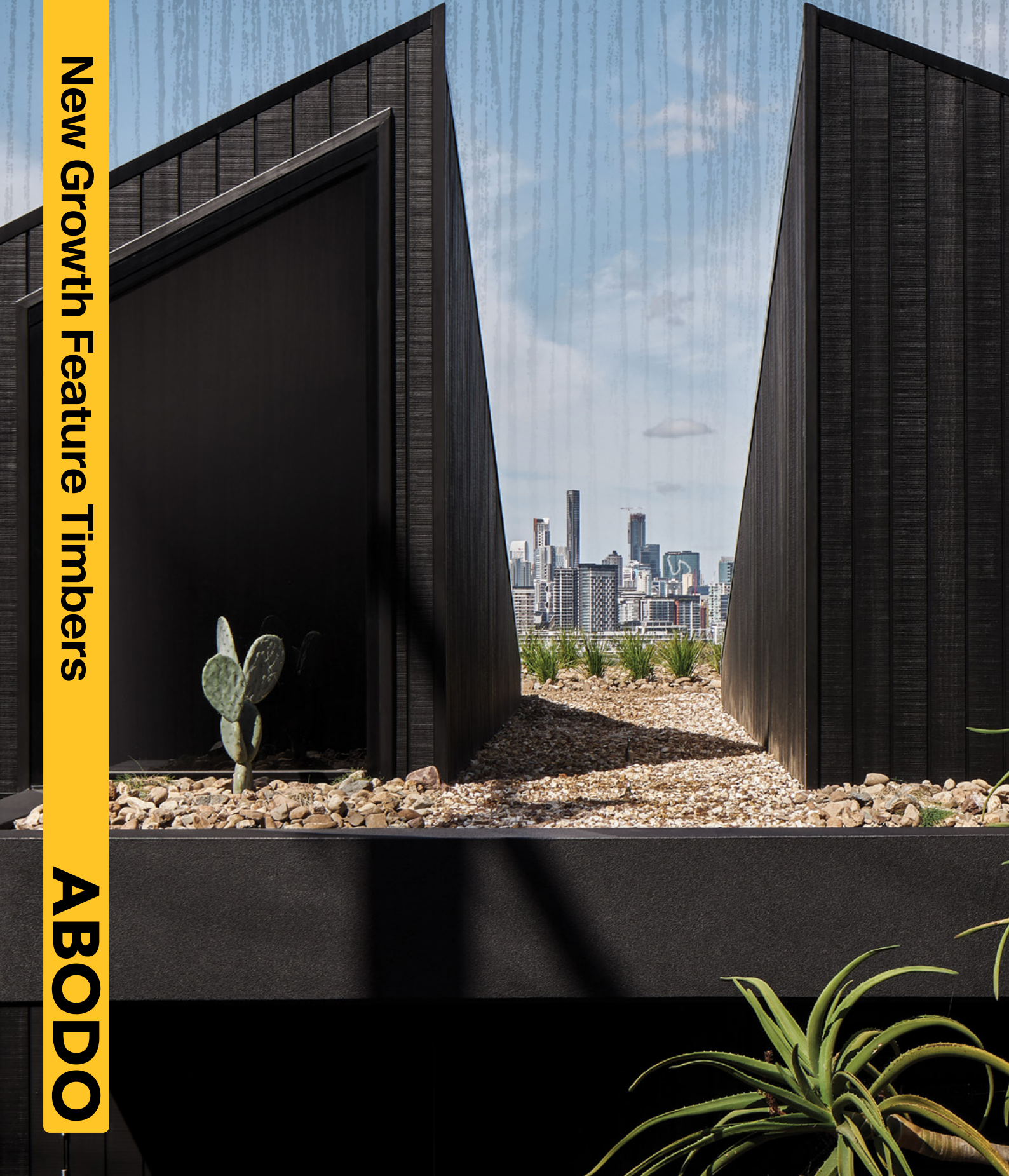




# Vulcan® Timber Feature Projects

New Growth Feature Timbers

ABODO





## Historic Aitken House – West Linton, Scotland



### Project details

**Architect:** Jefcoate Anderson

**Products:**

- Vulcan Cladding – Vertical Grain (WB12 Profile in Random Widths) in Protector – Ebony
- Vulcan Cladding – Vertical Grain (WB12 Profile 180x20) in Protector – Ebony and Protector – Teak

Sensitivity is paramount when creating a new structure in an area of ancient historic significance, like this village in the Southern Borders of Scotland. An external material palette of stone and Abodo Vulcan timber weatherboards were carefully chosen to help this new building merge with adjacent homes.

## Noka Lodge – Lincolnshire, England



### Project details

**Architect and Interiors:** Studio Mills

**Product:**

- Vulcan Cladding – Vertical Grain (Custom Profile) in a Silicate Coating (Light Grey)

Located within a village of holiday accommodation in the English countryside, Noka is a luxury 10-bedroom lakeside lodge suitable for large groups or as a venue for yoga or meditation retreats. Abodo Vulcan Cladding – Vertical Grain is used for all soffits and cladding, with a Silicate Coating creating a subtle, soothing aesthetic that is in keeping with the intentions for the lodge.



## Noir by Zephyr Industries – Brisbane, Australia



### Project details

**Architect:** The Artificial

**Product:**

- Vulcan Cladding – Vertical Grain (WB10 Profile 145x20) in Protector – Nero

Nestled into a hill in Hamilton, Brisbane, Zephyr Industries have realised a high-end, entertainer's paradise. Noir uses a dark and textured aesthetic of; Vulcan Cladding with Protector – Nero, blackened off form concrete, metal sheeting, glass and vegetation, transitioning in form, materiality and programme as it terraces down the hill.

## Culbara – Sunshine Coast, Australia



### Project details

**Design:** MRA Design

**Products:**

- Vulcan Screening Battens (42x42) in a Silicate Coating
- Vulcan Panelling/Lining (TG9 Profile 135x10) in Protector – Clear

A contemporary home that uses a bold combination of complementary materials including Abodo Vulcan battens and panelling, Culbara creates a statement in its riverside neighborhood.



## Dual Beauties – Sydney, Australia



### Project details

**Architect:** MHN Design Union

**Builder:** Airth Building

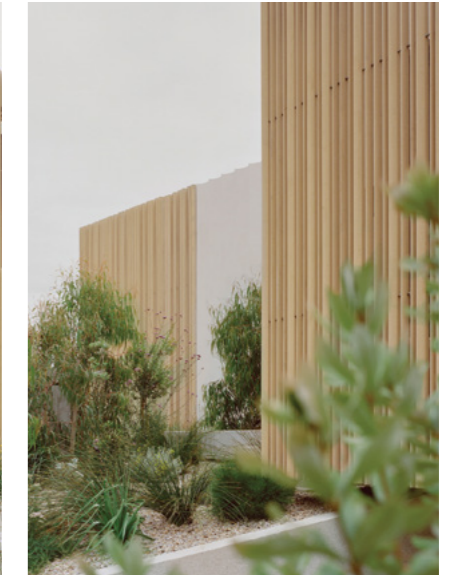
**Product:**

- Vulcan Cladding – Vertical Grain (Profile WB12 138x20) in Protector – Nero and Patina

**Photography:** Andreas Bommert

A mondrianic facade of Vulcan Cladding in two shades gives this pair of semi-detached houses a clean cut, modern look. Contrasting, yet cohesive shades of Protector – Nero and Patina lend depth to the front facade.

## House on the Bay – Melbourne, Australia



### Project details

**Architect:** Lovell Burton

**Builder:** Vaughan Constructions

**Product:**

- Vulcan Screening (Custom Profile) in Protector – Straw

**Photography:** Rory Gardiner

This beachfront home embodies its surroundings with a palette of raw, textured materials, including Vulcan Screening in a custom wave profile. Specified for a design that both echoes the water beyond and connects to the scalloped nature of the precast concrete walls.



## Siskas Apartments – North Fremantle, Australia



### Project details

**Architect:** Fred Zuideveld and Craig Steere

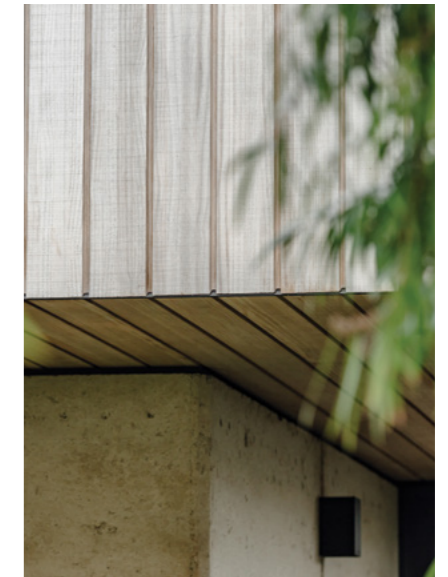
**Product:**

- Vulcan Screening

**Photography:** Acorn Photo

Siskas Apartments in North Fremantle is a luxury apartment building in Western Australia that has made use of Vulcan Screening for pergola structures around its pool deck and lobby. For an upmarket residence that prides itself on its landscaping, these pergolas provide a sense of serenity and leafy opulence while also meeting practical needs for shade.

## BH2 House – Barwon Heads, Australia



### Project details

**Products:**

- Vulcan Cladding – Vertical Grain (WB10 Profile 145x20) in a Silicate Coating
- Vulcan Screening in a Silicate Coating

**Photography:** Elizabeth Kennedy

On an estuary, the site is situated within a stone's throw of the Bass Strait and its ocean spray, coupled with the local weather being harsh, with cold damp winters and hot dry summers of 40 degrees. The brief for the timber was for something: stable, durable, and lower maintenance. Our thermally modified Vulcan timber with a Silicate Coating met all three key requirements.



## Food Innovation Precinct – Mandurah, Australia



### Project details

**Architect:** i2c Architects

**Builder:** Cooper & Oxley

**Products:**

- Vulcan Cladding – Vertical Grain (WB10 Profile 125x20), Fine Bandsawn Finish in Protector – Straw and Intergrain Char Black
- Vulcan Screening (140x30, 11x40, 200x40), Fine Bandsawn Finish in Protector – Manuka

**Photography:** Silvertone Photography

A palette of Abodo timbers lends a sense of cohesion to this food research and development facility's three interconnected hubs.

## Twin Gables – Southampton, United States



### Project details

**Architect:** THE UP STUDIO

**Products:**

- Vulcan Cladding – Vertical Grain (WB12 Profile 138x20) in a Silicate Coating
- Vulcan Screening Beams in a Silicate Coating

Named Twin Gables, the residence echoes forms traditionally seen in rural settings. The creative and varied use of Abodo timber claddings, roofing, trellis and slats provides a new angle on the classic barn style.



## Three Falls – Utah, United States



### Project details

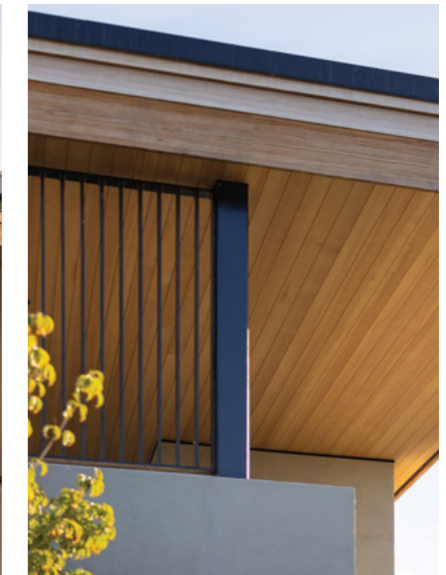
**Architect:** Lloyd Architects

**Product:**

- Vulcan Cladding – Vertical Grain (WB12 Profile 138x20) in Protector – Graphite

Named for the three mountain peaks visible from this Utah property, the aesthetics of Three Falls means it merges well with the alpine surroundings while its key materials, including Abodo Vulcan Cladding, are chosen to withstand the dry Utah climate.

## Cascading Volumes – British Columbia, Canada



### Project details

**Architect:** Keck Architecture + Design

**Product:**

- Vulcan Cladding – Vertical Grain (WB12 138x20 and WB12 Random Widths) in a Silicate Coating

Designed as an extension of the surrounding landscape, this home pairs vulcan timber cladding finished in the natural, silvery tones of Silicate Coating with a combination of pale stone and tiling, resulting in a cohesive and calming home by the sea.



## Coastal Wainui Home – Gisborne, New Zealand



### Project details

**Architect:** Kingsbeer Architecture

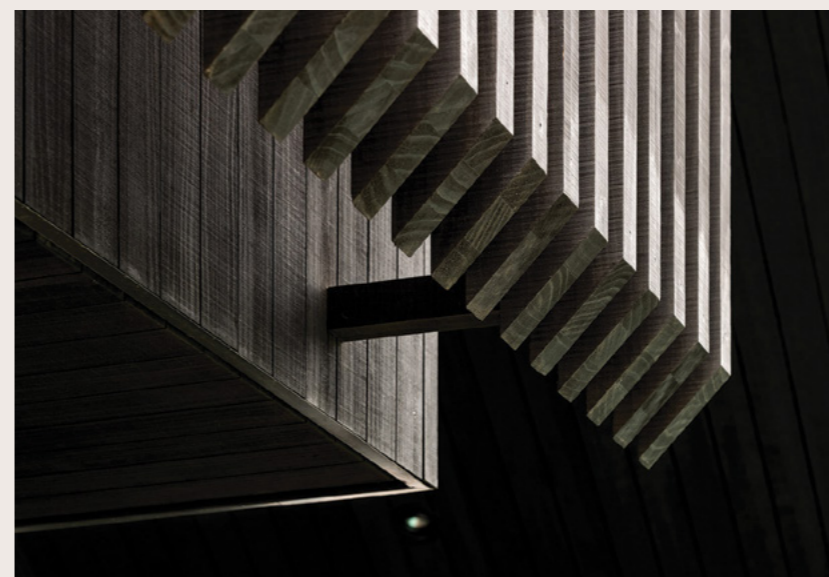
**Product:**

- Vulcan Cladding – Vertical Grain (WB12 Profile 180x20) in Protector – Straw

Abodo's thermally modified Vulcan Cladding was chosen for both the exterior cladding and interior walls of this beach-side home.

Fortified with thermal modification, Vulcan Cladding is capable of handling harsh coastal conditions without warping or twisting, while also safe for use inside the home where people are naturally drawn to touch and interact with the warmth of timber elements.

## Westmere House – Auckland, New Zealand



### Project details

**Architect:** Matter Architects

**Products:**

- Vulcan Cladding – Vertical Grain (WB12F Profile) in Protector – Nero
- Vulcan Screening in Protector – Nero

**Photography:** Simon Devitt

The original home included a 2009 addition of a garage with bedroom above, which had the appearance of being tacked on without much thought. The homeowners, with three young daughters, wanted a cohesive and modern look with more space and better connections with the pool and garden.



## Pōhuehue House – Mahurangi, New Zealand



### Project details

**Architect:** Felicity Brenchley

**Products:**

- Vulcan Cladding – Vertical Grain:
  - (WB12F Profile 180x20) in Protector Hybrid – Natural
  - (WB12 Profile 180x20, 90x40, 138x20) in Protector Hybrid – Natural
  - (WB12F Profile 180x20) in Protector – Teak

**Photography:** Samuel Hartnett

From a semi-rural camping spot to a home fit for Grand Designs New Zealand, this Mahurangi project was a labour of love for architect Felicity Brenchley. Created using an array of natural finishes and materials, this coastal home is designed with sustainability in mind.

## North Point – Raglan, New Zealand



### Project details

**Architect:** Red Architecture

**Products:**

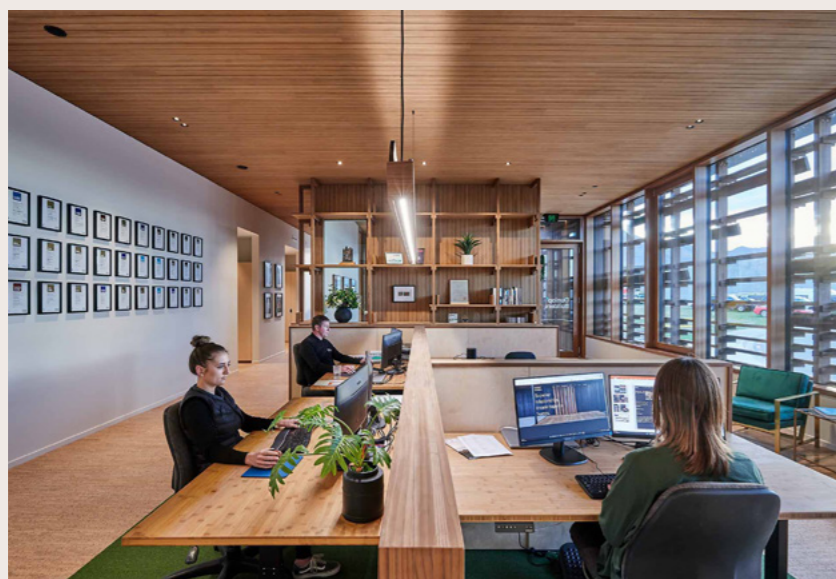
- Vulcan Cladding – Vertical Grain (WB12F Profile 180x20) in Protector – Straw
- Vulcan Screening (BAND4S Profile 88x25) in Protector – Straw

**Photography:** Larnie Nicolson

Planned to bring about a sense of community, this artfully arranged collection of townhouses in Raglan features Vulcan eco-timbers in the warm tones of Protector – Straw. When architected and executed thoughtfully, compact urban developments like this one in Raglan have many benefits for both residents and the environment.



## Dunlop Hub – Wanaka, New Zealand



### Project details

**Architect:** Steven Lloyd Architecture & Pac Studio

**Passive House Consultants:** VIA Architecture

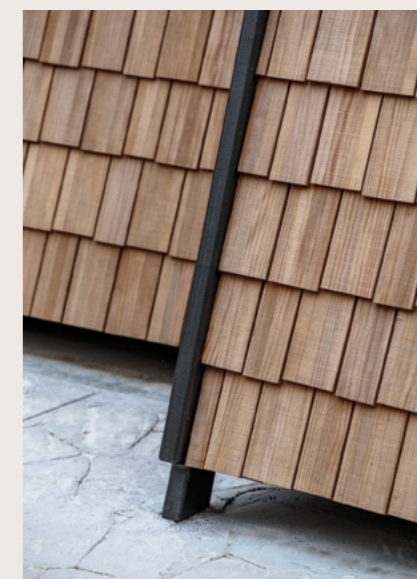
**Products:**

- Vulcan Cladding – Vertical Grain and Screening, Brushed and Bandsawn Finishes, in Iron Vitriol
- Vulcan Cladding – Vertical Grain and Screening, Brushed and Bandsawn Finishes, Uncoated
- Joinery – Vertical Grain
- Vulcan Decking

**Photography:** Dunlop Builders, Chris Lea and Mickey Ross

Featuring Abodo timbers, Dunlop Builders' HQ is the first office to achieve Passive House certification in New Zealand. The form of the Hub is based on an architectural shed with a design that mixes practicality with beauty, resulting in an artfully finished building that still allows for the hands-on nature of the business.

## Snow Leopard Enclosure – Wellington, New Zealand



### Project details

**Architect:** Architecture Workshop

**Product:**

- Vulcan Shingles

**Photography:** Grant Davis

Wellington Zoo's snow leopard enclosure uses Vulcan Shingles to create a Himalayan inspired aesthetic.

The Vulcan timber shingles provide a varied grain depth and a texture that is reminiscent of mountain huts and alpine terrain.

